

Car-Organizer 3.0

for Windows®

Home

What's new

Input / Output

Evaluation

Driver's Log

Full Version

Home

With CarOrganizer you can easily keep track of any expenses connected to your personal vehicle(s). Version 3.0 is the fifth release of this successful software, which has been greatly improved, based on the feedback of many users.

The software computes the fuel consumption of your car in detail and provides you with a complete overview of all costs involved in maintaining the vehicle. In addition, you can record a detailed driver's log with this application.

As with all software products by Euchler Software, the basic-version is completely free of charge. The program can be used indefinitely and distributed further (for free). If you like this tool and you are interested in further supplementary functions, you can buy the full version for only 4.79 €.

If you would like further information or supply the author with any critics or suggestions (which is both most welcome), please contact us at www.euchler-software.com.

Martin Euchler



St. Catharines, 20/03/2014

What's new

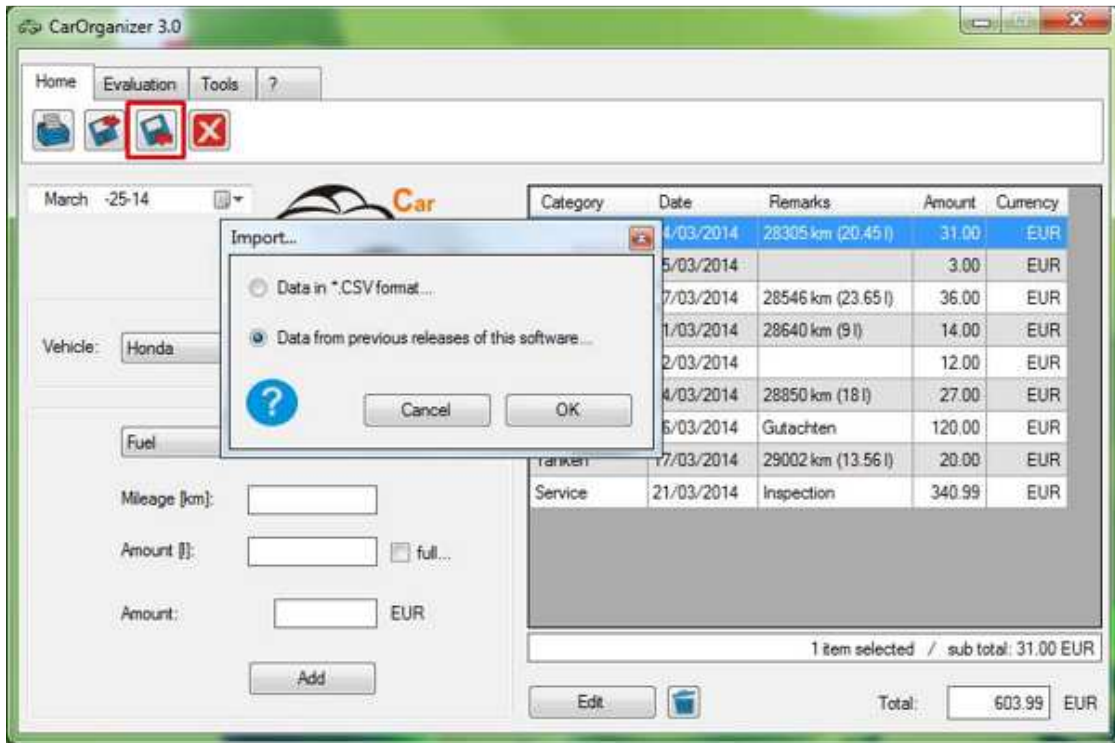
You are already using a previous release of CarOrganizer (e.g. Version 2.1)?

Here you will find a short summary of the most important improvements and new functions as well as instructions to import your "old" data from previous versions.

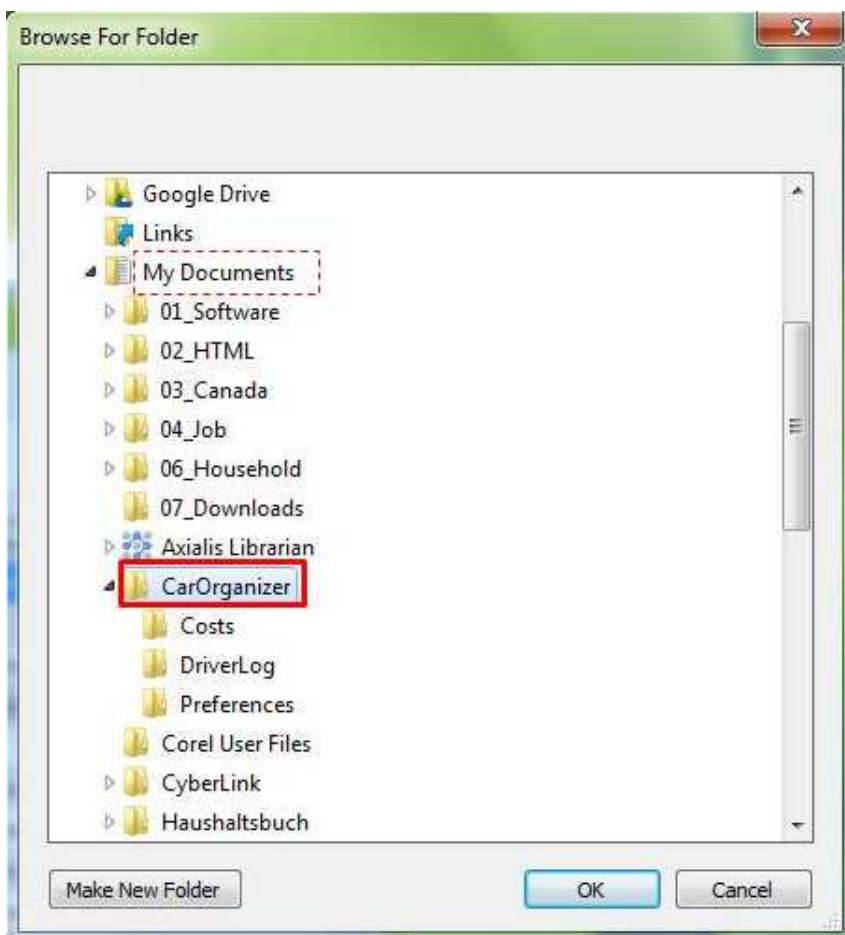
- The entire interface of the software was improved regarding design and handling...
- Periods of time for evaluation of your data can be arbitrarily chosen from now on...
- Categories for expenses can be created and managed arbitrarily...
- Improved graphic visualization of your data with 3D charts...
- Functions for printing your data were significantly improved...

It is easy to carry over your data from one of the previous releases of this software (e.g. Version 2.1). Here you find ["Step-by-Step Instructions"](#) for importing existing data.

To carry over your data from previous releases of CarOrganizer (e.g. Version 2.1) into the new Version 3.0, click the button *"Import"* in the "Home" menu. The dialog window for data import will appear. Select the option *"Data from previous releases of this software"* and click *"OK"*.



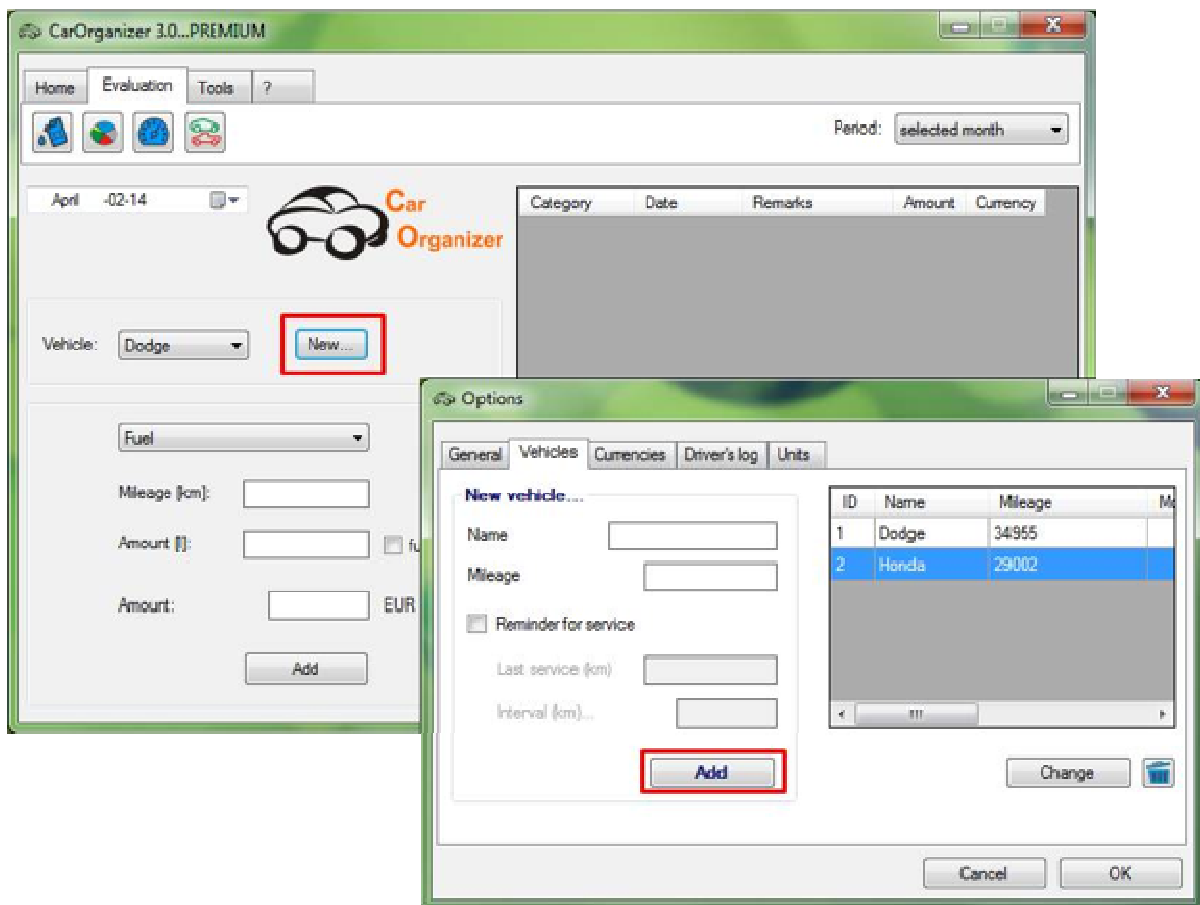
In the directory selection window, select the folder "CarOrganizer" in which the previous data is stored on your computer (in case of a standard installation this folder should be located in your personal "Documents" or "My Documents" folder).



The vehicles including all relevant data will be imported and can from now on be selected in the drop down menu. Should you encounter any problems, contact us to find a solution to the problem.

Input / Output

To add a new vehicle, simply click the "New..." button, or select "Tools" - "Options" in the main menu. The options-window will pop up and the tab "Vehicles" will be pre-selected.

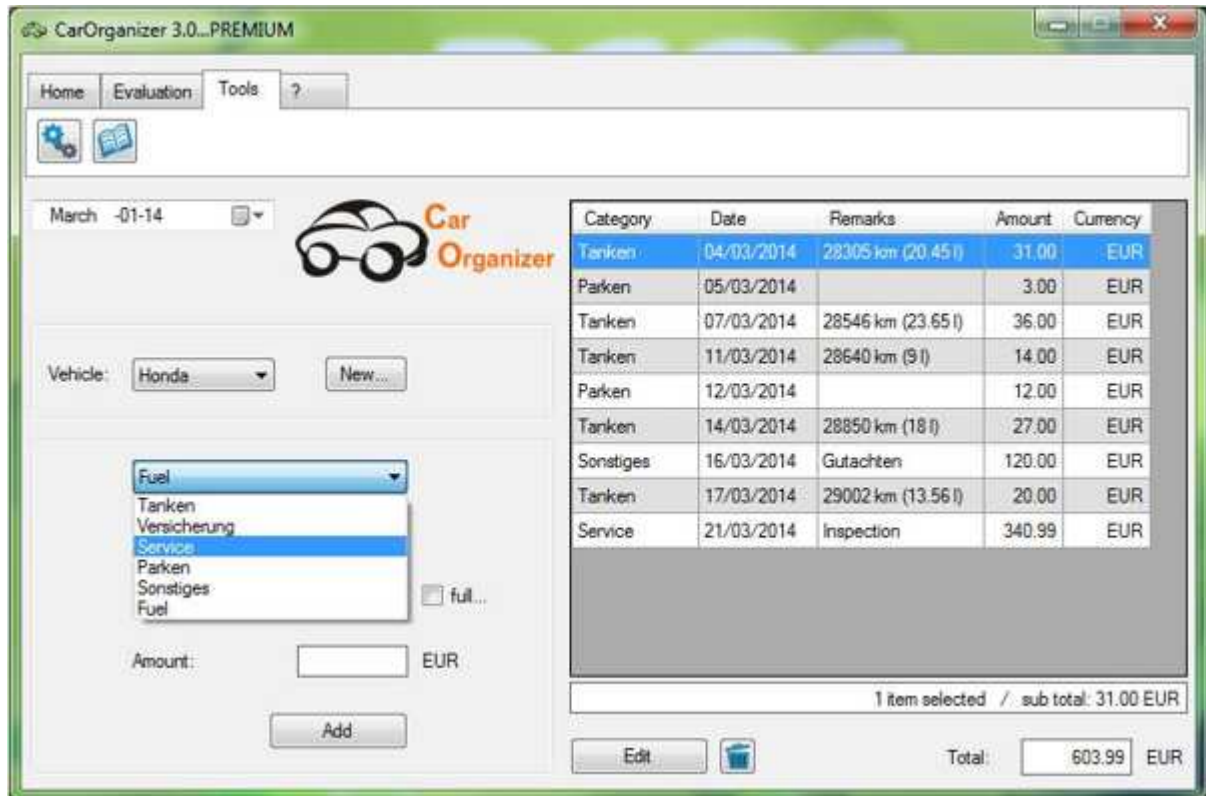


Enter the requested vehicle-data into the form on the left side and click the "Add" button, which will add the new vehicle to the list. You are now ready to start recording any expenses of this vehicle.



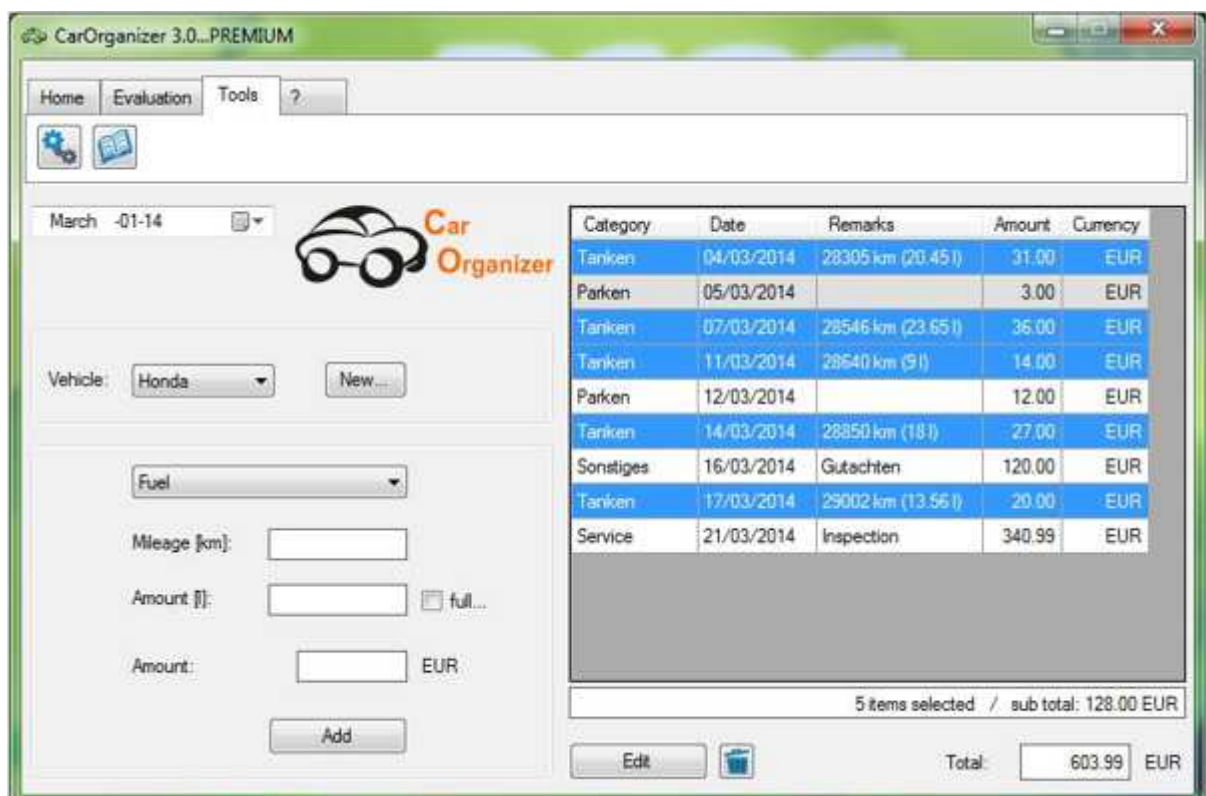
Before you enter a specific expense, choose the vehicle in the drop-down menu as well as the correct date in the date picker (by default, the current date is set after starting the application).

Choose one category; enter supplementary remarks (if applicable) and the amount of money into the corresponding textboxes. After you press "Enter", or click the "Add" button, the expense will appear in the table-view on the right hand side.



If you enter fuel costs, set the tick in the box if you have filled up completely or not. This is required information to compute the fuel consumption of your vehicle correctly.

To compute the subtotal of different table-entries, just mark the respective lines with the left mouse-button while holding the "Ctrl" key.



The current subtotal along with the month's total is displayed below the table. This way, you can quickly gain an overview of all expenses of the selected vehicle.

You can export the tables as *.csv files. This gives you the opportunity to read and process the data with e.g. MS-Excel. To do so, simply select the "Export (*.csv)" button in the "Home" menu. The button "Import (*.csv)" can be used to read in and manage data that have been externally created.

The screenshot shows the CarOrganizer 3.0 PREMIUM software interface. The main window has a menu bar with "Home", "Evaluation", "Tools", and "?". Below the menu is a toolbar with icons for Home, Evaluation, Tools, and a close button. The main area displays a car icon and the text "Car Organizer". A dropdown menu shows "March -01-14". Below this is a "Vehicle:" dropdown set to "Honda" and a "New..." button. There are input fields for "Fuel", "Mileage [km]", "Amount [l]", and "Amount:" with a "EUR" unit selector and an "Add" button. A table on the right shows a list of transactions with columns for "Category", "Date", and "Rem".

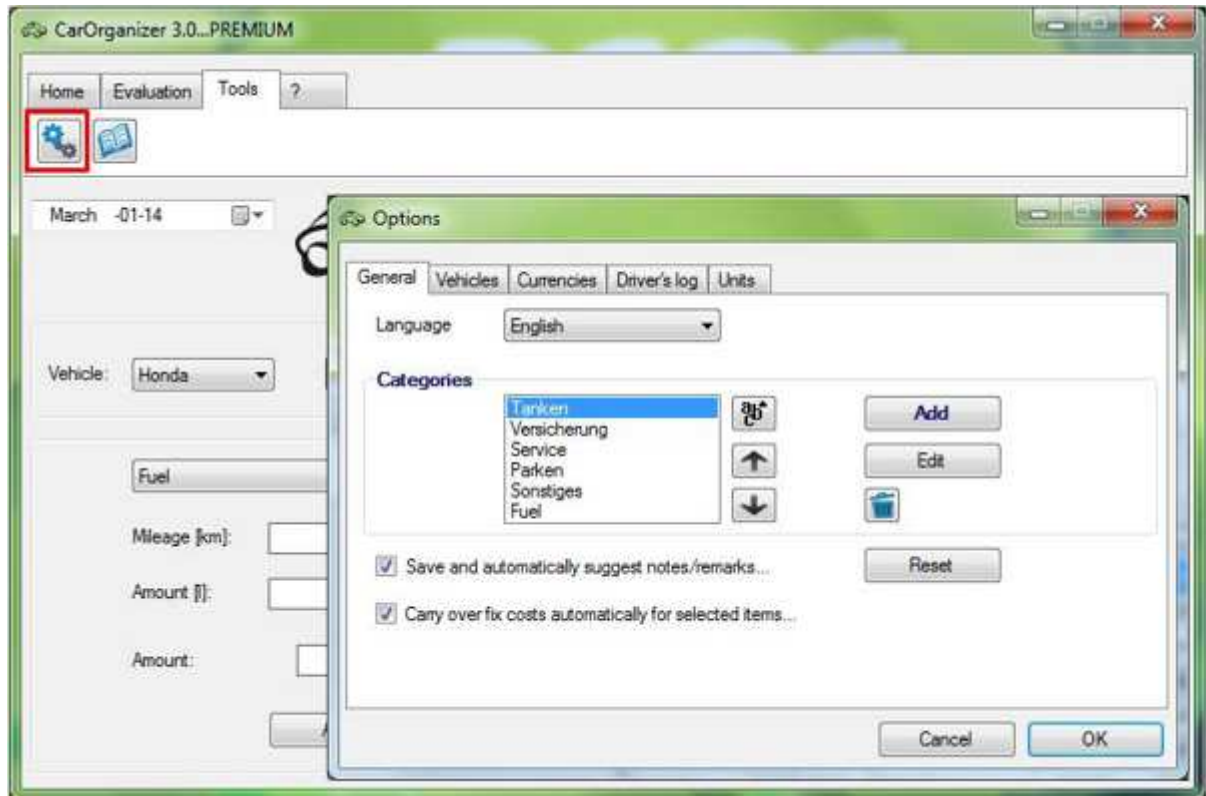
Category	Date	Rem
Tanken	02/01/2014	2456
Tanken	07/01/2014	2473
Service	10/01/2014	Ölch
Tanken	14/01/2014	2524
Parken	15/01/2014	
Versicherung	15/01/2014	
Tanken	23/01/2014	2579
Tanken	27/01/2014	2589
Tanken	29/01/2014	2599
Tanken	31/01/2014	2629
Parken	03/02/2014	
Tanken	04/02/2014	2647
Tanken	06/02/2014	2675

To the right, a Notepad++ window shows the CSV export of the data from the table above. The file is named "Honda.csv" and contains the following text:

```
1 Kategorie;Datum;Bemerkungen;Re
2 Tanken;02/01/2014;24564 km (34
3 Tanken;07/01/2014;24736 km (18
4 Service;10/01/2014;Ölchange;f
5 Tanken;14/01/2014;25243 km (56
6 Parken;15/01/2014;;13;EUR
7 Versicherung;15/01/2014;;356;e
8 Tanken;23/01/2014;25792 km (57
9 Tanken;27/01/2014;25890 km (8
10 Tanken;29/01/2014;25995 km (10
```

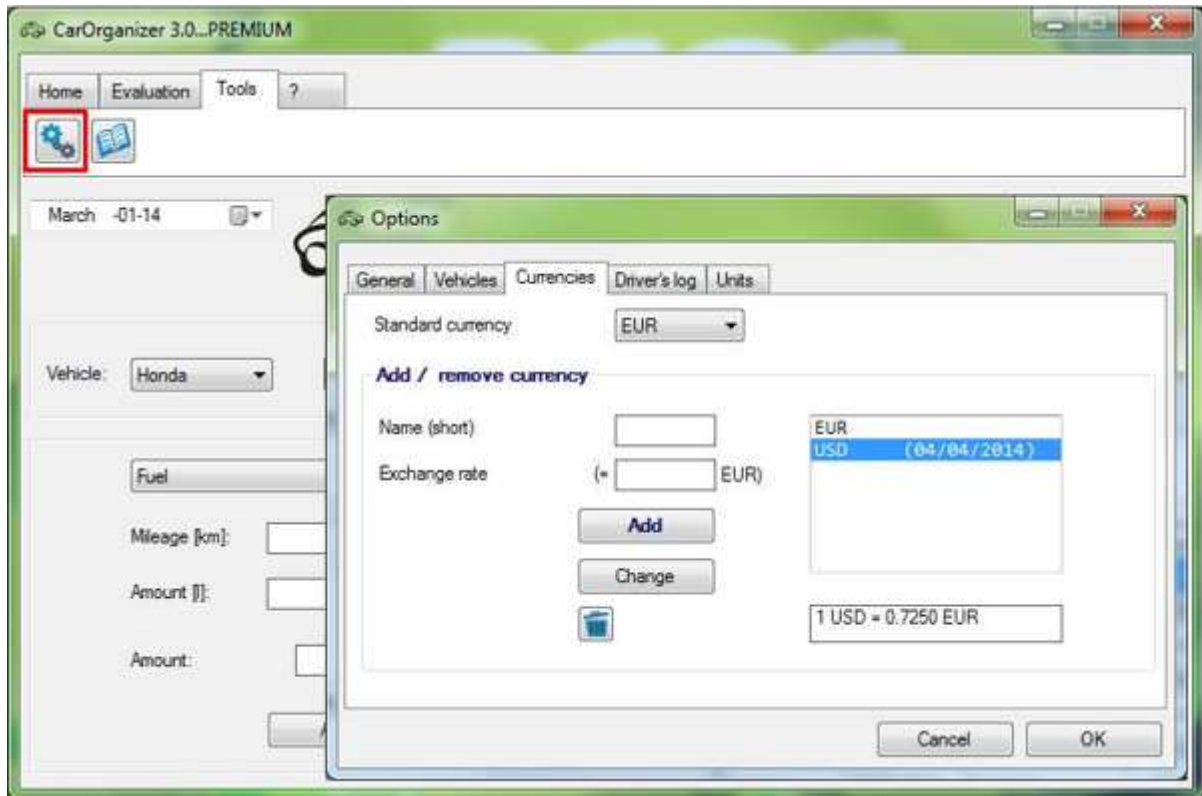
The file format *.csv means that your data is saved as a regular text file and the values of the different columns are separated by semicolon. This type of file is very versatile and can be read by many programs (e.g. MS Excel).

The menu-point "Tools" - "Options" enables you to customize some preferences to your specific needs.

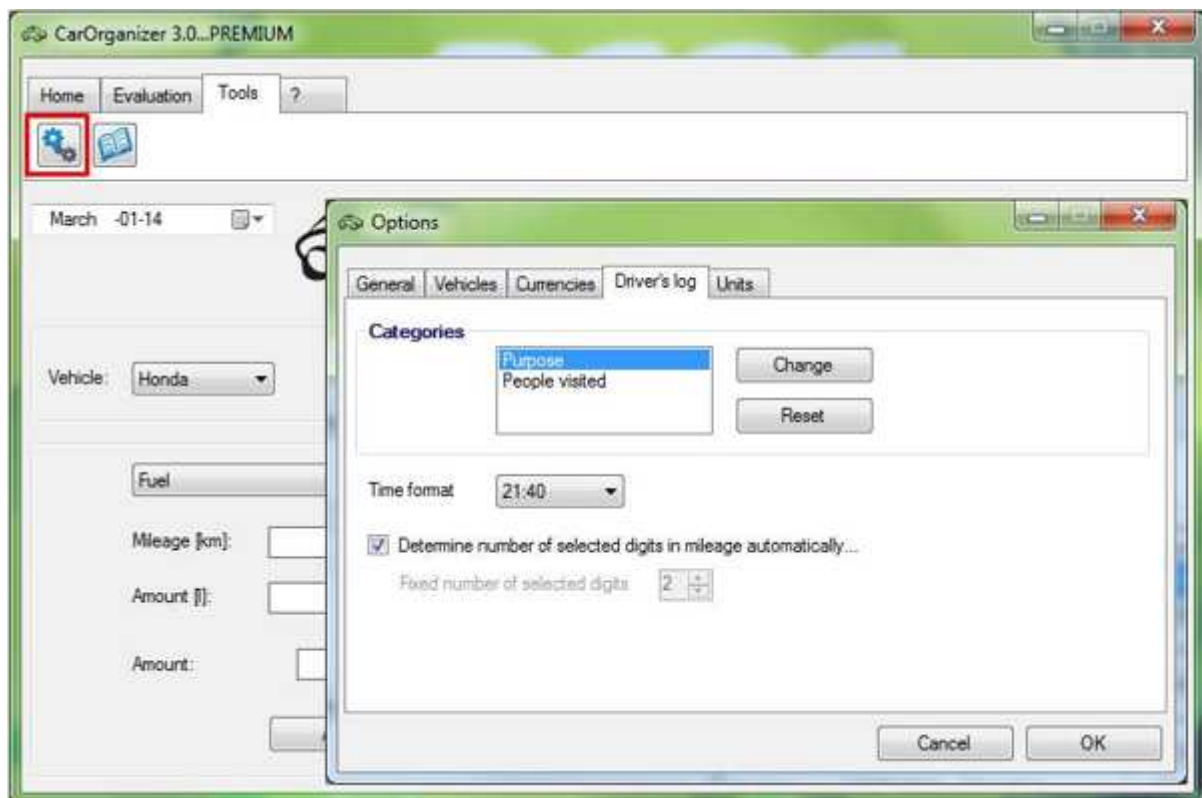


In tab "General" you have the chance to select the language. You can also check boxes to save and automatically suggest remarks and automatically carry over fix expenses.

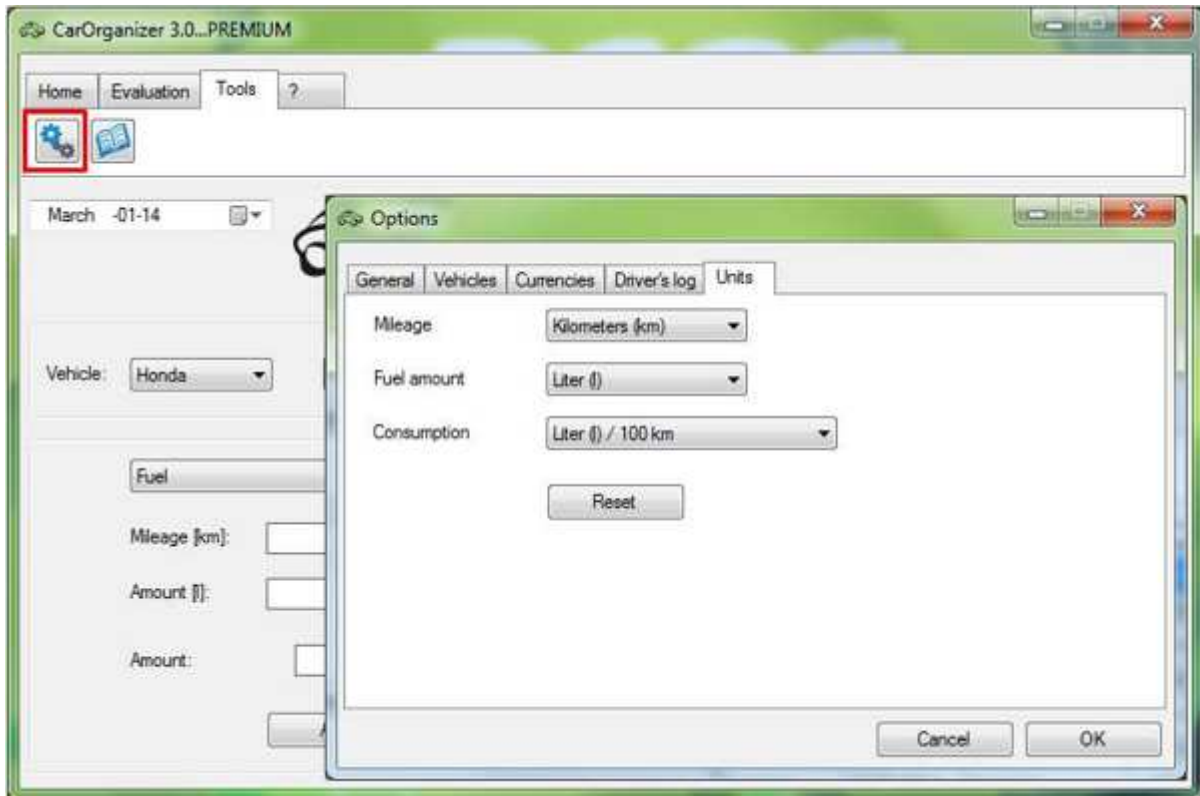
Under the tab "Currencies" you can add any number of foreign currencies, which enables you to record your costs in other currencies than EUR (which is the standard currency of this application).



In tab "Driver's Log" you can adjust the basic preferences of the electronic driver's log. Here you can change field captions, choose the time format and select the number of pre-selected digits in the mileage.

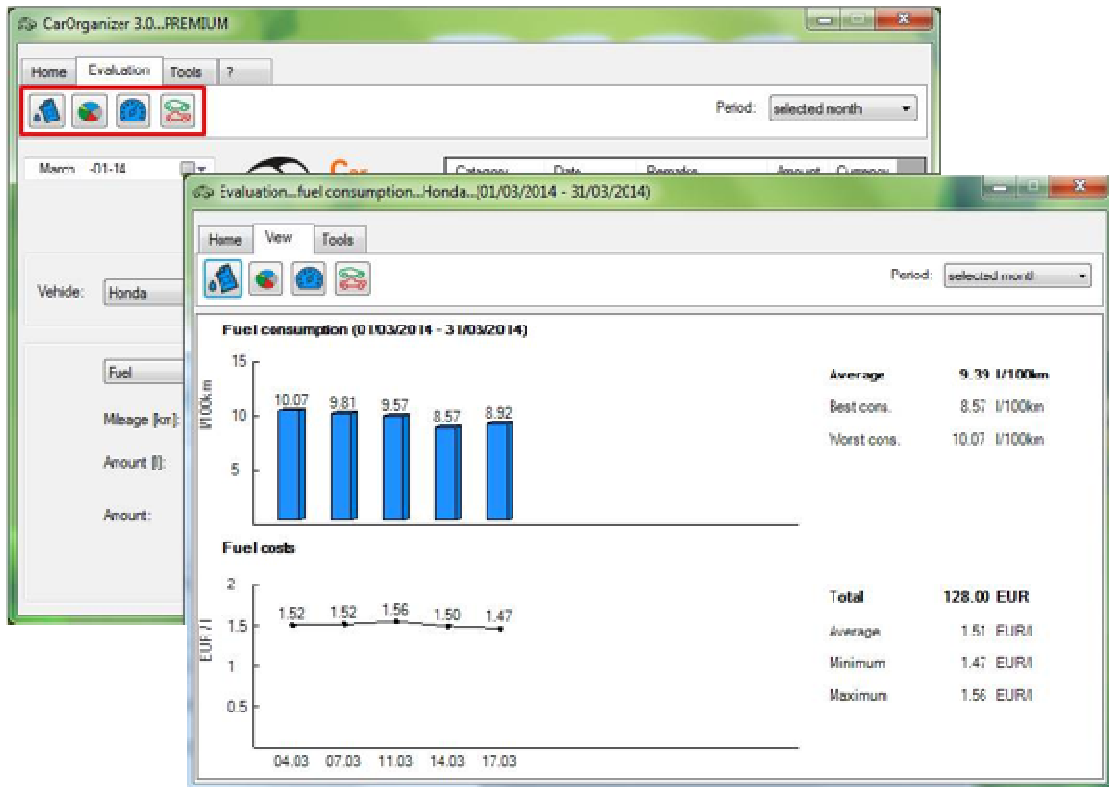


The tab "Units" manages the units of measure for mileage, fuel amount and fuel consumption. Click the button "Reset" to restore the basic settings ("km", "L", "L/100 km").

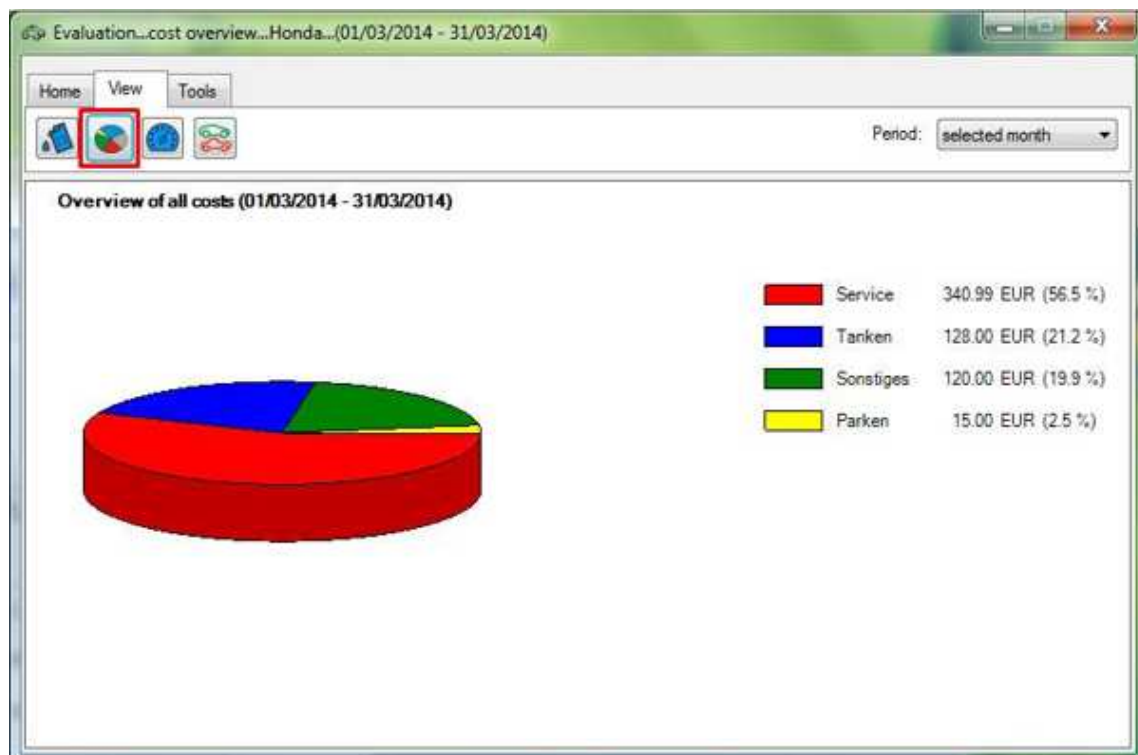


Evaluation

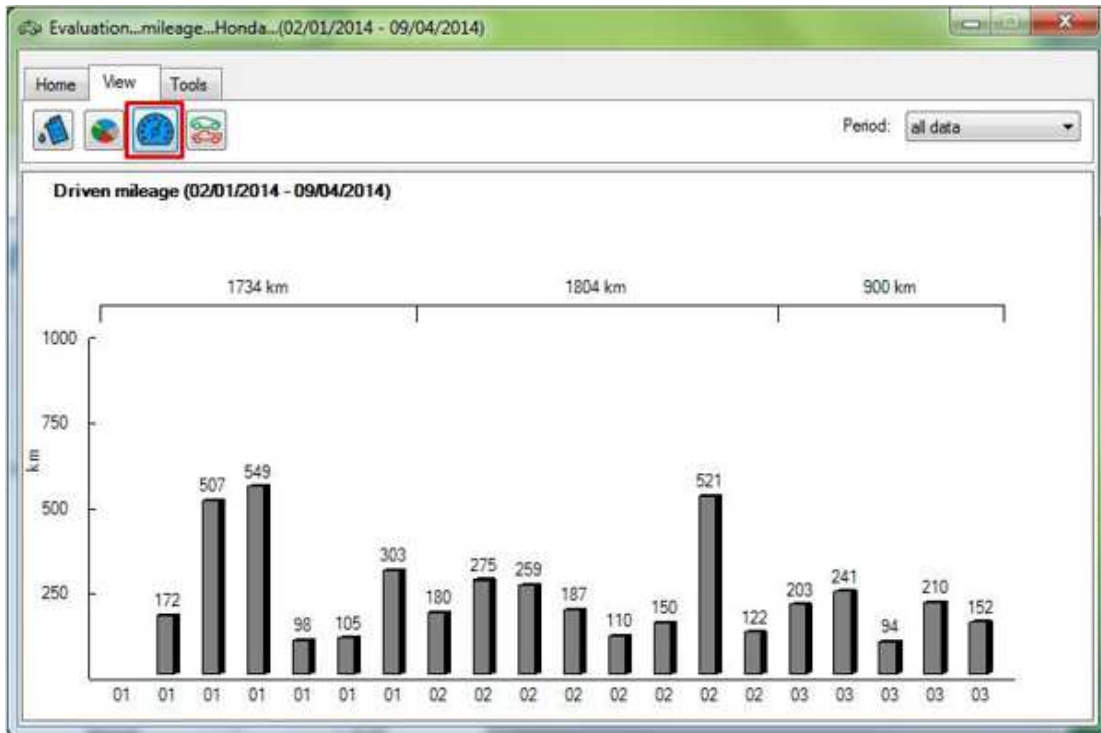
In the main menu "Evaluation" you can start the graphical evaluation. Fuel consumption, fuel costs, mileage and overall costs for the currently selected vehicle will be presented to you in clearly arranged charts.



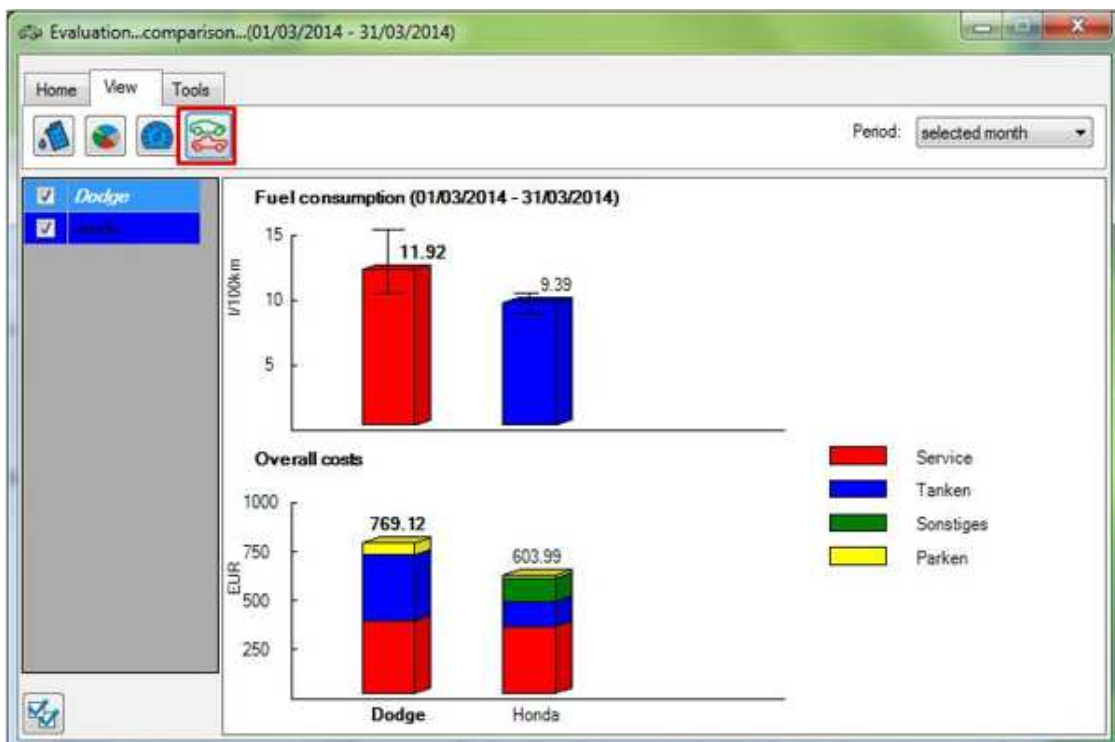
You can show the overall costs as pie- or column chart. In the drop-down menu the time period for which the data should be shown can be selected.



The function "Mileage" evaluates the covered distance within the specified period of time in a column chart. This makes it easy to spot how many km per month or year are actually driven.



The chart "Vehicle comparison" enables you to compare the fuel consumption and the total costs of different vehicles. Select or deselect a vehicle in the table on the left to include (or exclude) the given vehicle in the comparison.

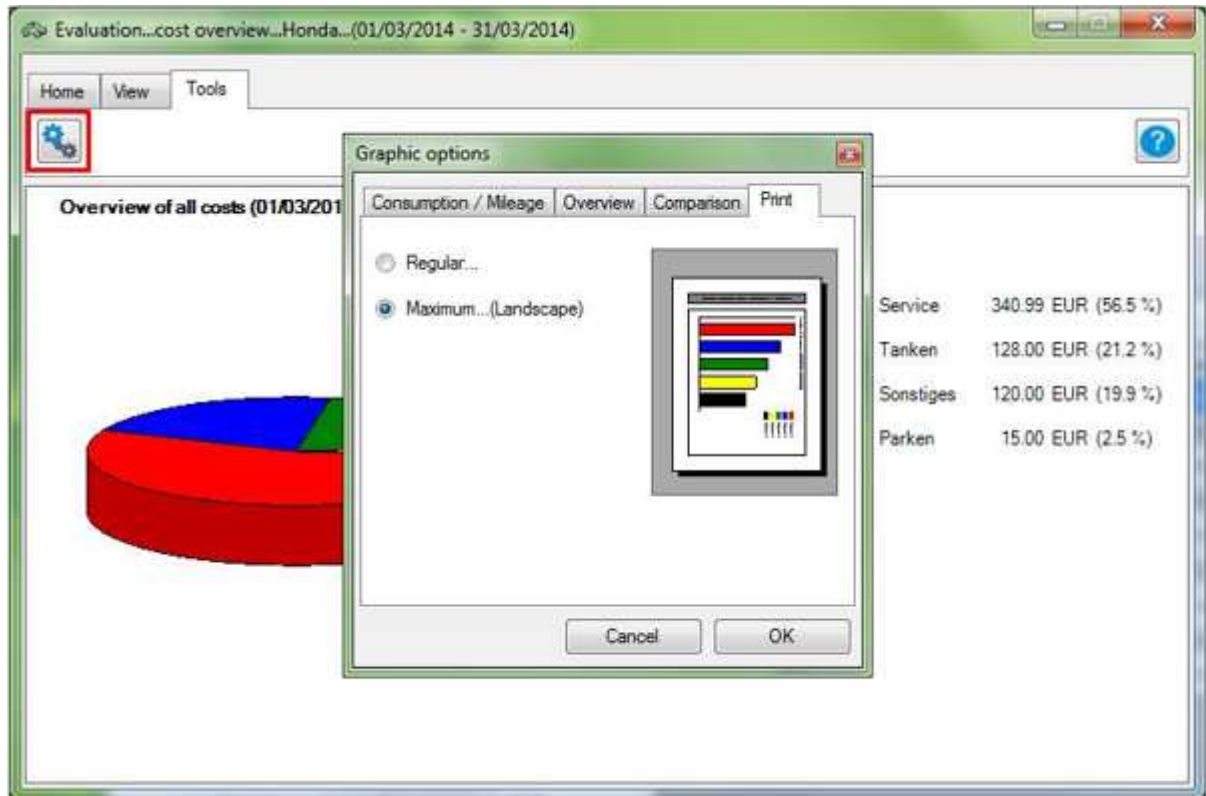


The two functions described above are only available in the full version of this software.

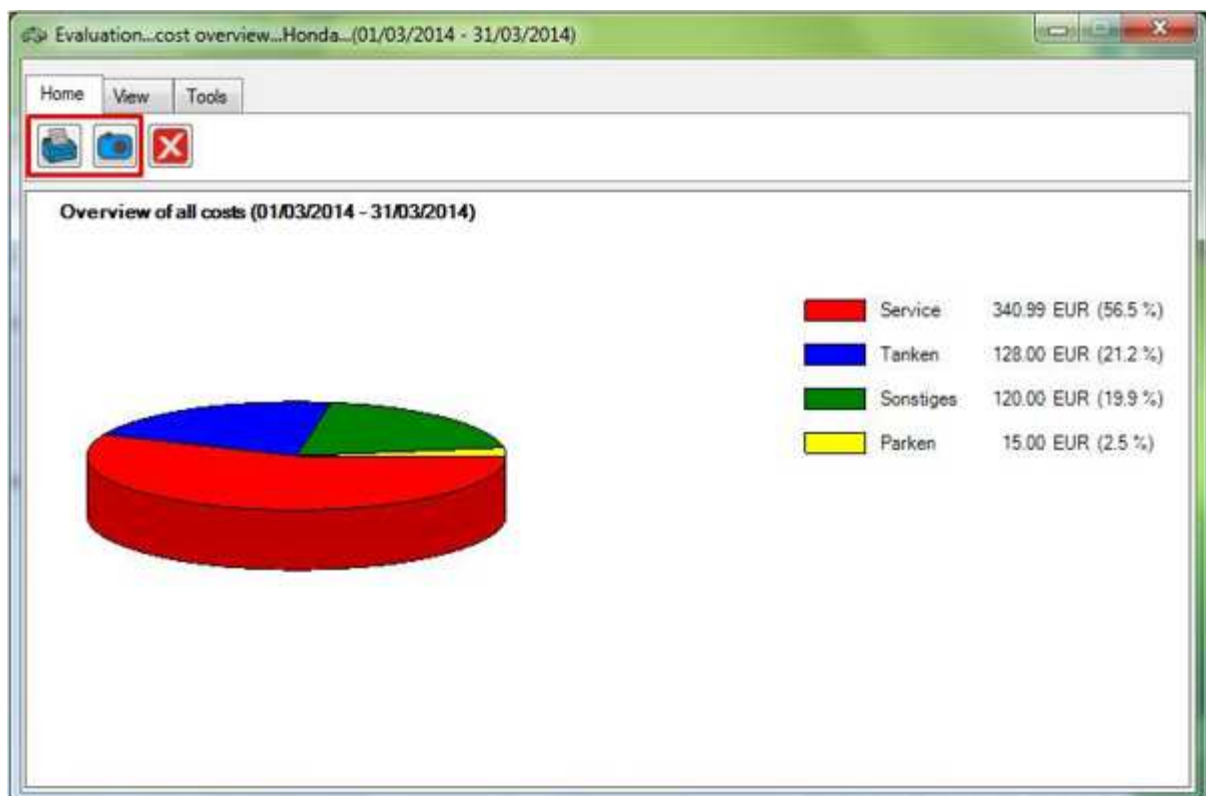
The point "*Options*" in the "*Tools*" menu enables you to adapt the chart colors and the types of graphics to your personal preferences. Here you can choose between 2D and 3D charts and select whether you want to display numerical values inside the graph.



In the tab "*Print*" you can select whether you want to print the graph landscape (page filling) or portrait.

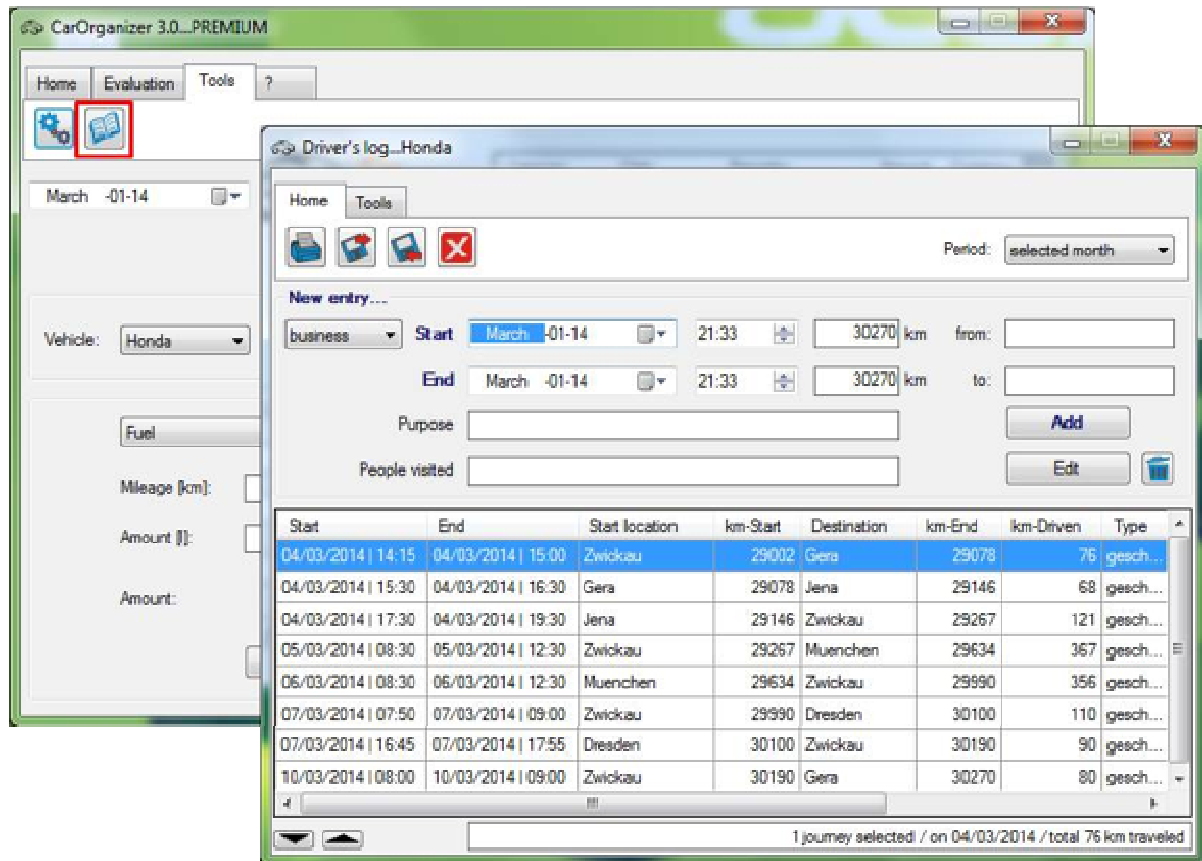


In the "Home" menu, you will find the button "Print" with can be used to print the currently shown graphic. In addition, you cans save the current chart as an image file to your computer.

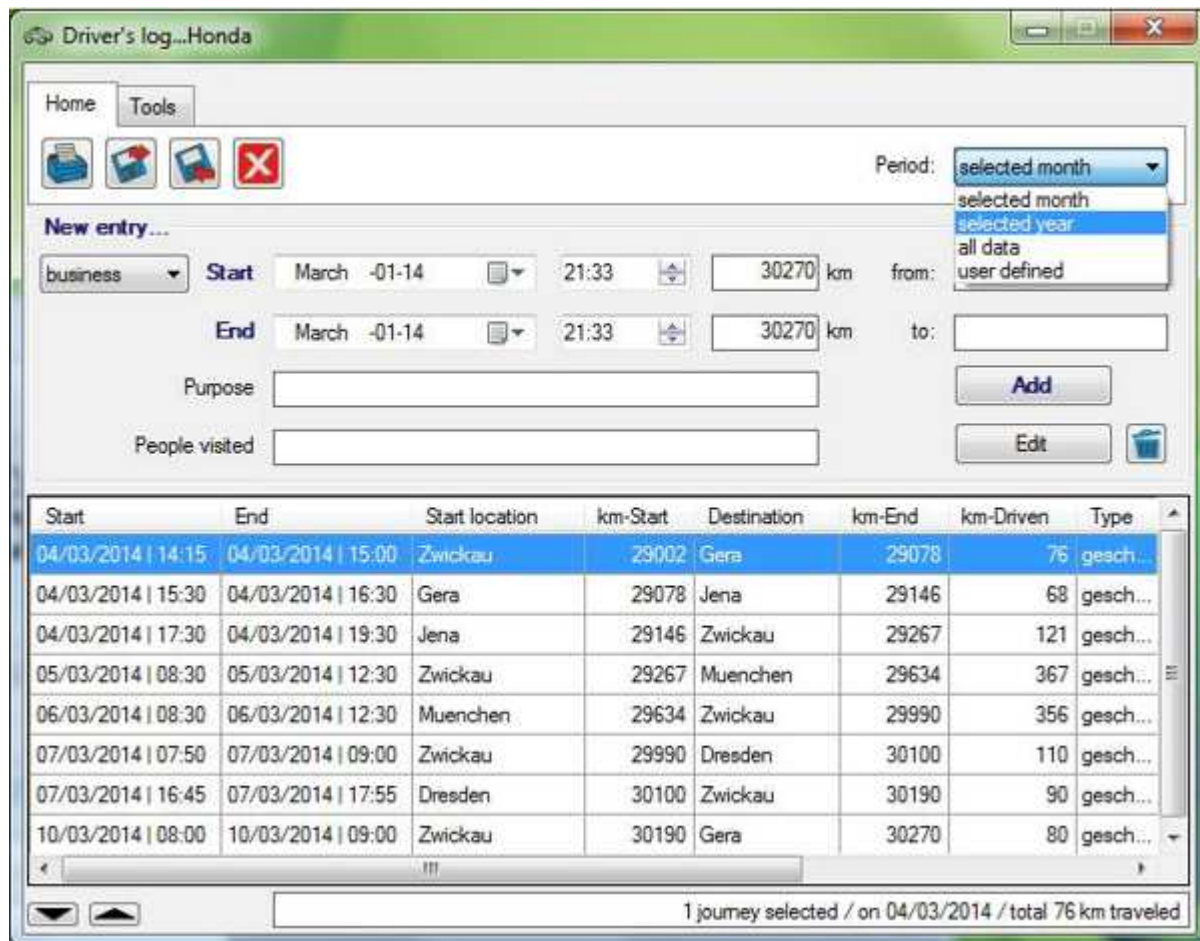


Driver's Log

The driver's log can be started from the "Tools" menu (* - please see note at the bottom of page). A new window will open where all the entries will be managed.

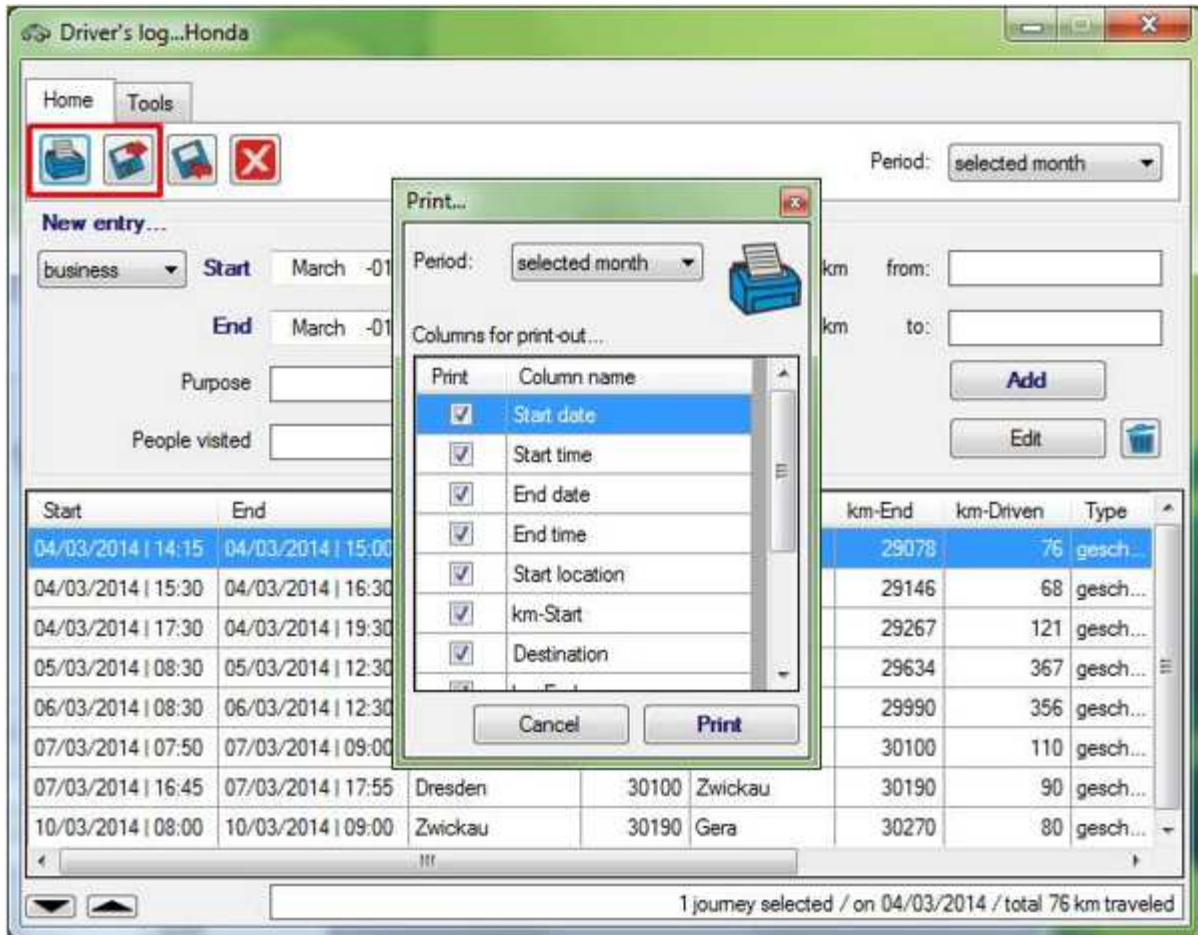


You can select the period of time that you want to see in the table from the drop-down menu.



(*) Note: The driver's log of this software should be used as sort of personal log book. If you want to use the driver's log for your tax declaration, please enquire in advance at your revenue agency whether the print out of this software will be accepted. CarOrganizer is not officially certified for this purpose. In case the print out is not accepted, *Euchler Software* cannot assume any liability.

In the "Home" menu you will find both, a function to print your data as well as to export your data as *.csv file. In both cases you can select which column should be carried over for the print/export and which not.



The file format *.csv means that all entries will be saved separated by semicolon in a simple text file. These files are very versatile, enabling you to manage the data with other software applications (e.g. MS Excel).

Driver's log...Honda

Home Tools

Period: selected month

New entry...

business Start March -01-14 21:38 30270 km from:

End March -01-14 21:38 30270 km to:

Purpose

People visited

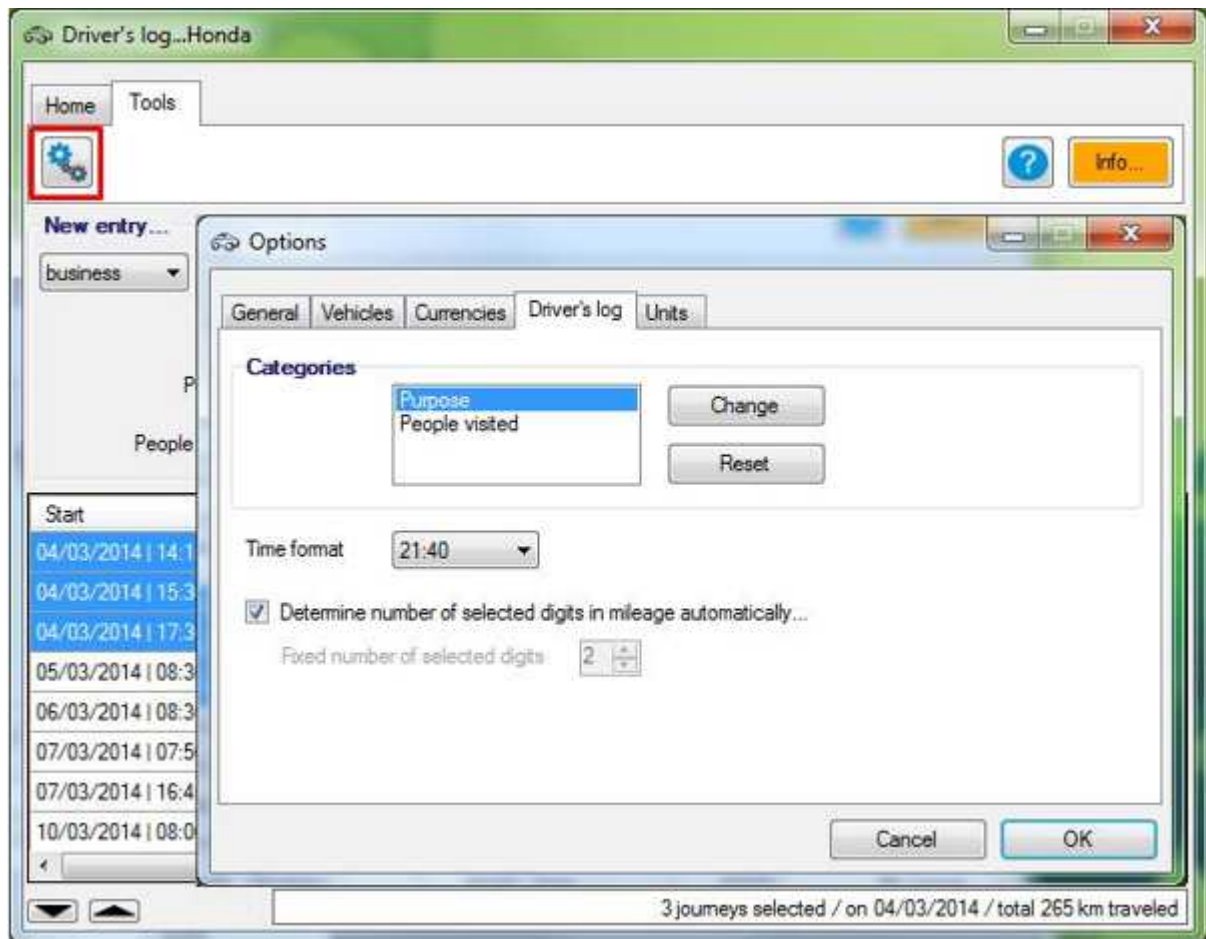
Add Edit

Start	End	Start location	km-Start	Destination	km-End	km-Driven	Type
04/03/2014 14:15	04/03/2014 15:00	Zwickau	29002	Gera	29078	76	gesch...
04/03/2014 15:30	04/03/2014 16:30	Gera	29078	Jena	29146	68	gesch...
04/03/2014 17:30	04/03/2014 19:30	Jena	29146	Zwickau	29267	121	gesch...
05/03/2014 08:30	05/03/2014 12:30	Zwickau	29267	Muenchen	29634	367	gesch...
06/03/2014 08:30	06/03/2014 12:30	Muenchen	29634	Zwickau	29990	356	gesch...
07/03/2014 07:50	07/03/2014 09:00	Zwickau	29990	Dresden	30100	110	gesch...
07/03/2014 16:45	07/03/2014 17:55	Dresden	30100	Zwickau	30190	90	gesch...
10/03/2014 08:00	10/03/2014 09:00	Zwickau	30190	Gera	30270	80	gesch...

3 journeys selected / on 04/03/2014 / total 265 km traveled

If you select more line items in the table, you can find a short summary of the entries in the bar below the table. In this summary you can see for example on one glance how many km you have driven in one particular day.

Under the menu point "Tools" - "Options" you can adapt the settings of the driver's log to your personal preferences. Here you can change field captions, choose the time format and select the number of pre-selected digits in the mileage.



Full Version

As with all software products by Euchler Software, the basic-version is completely free of charge. The program can be used indefinitely and distributed further (for free). If you like this tool and you are interested in supplementary functions, you can buy the upgrade to the full version CarOrganizer 3.0 PREMIUM for only 4.79 €.

The additional features are:

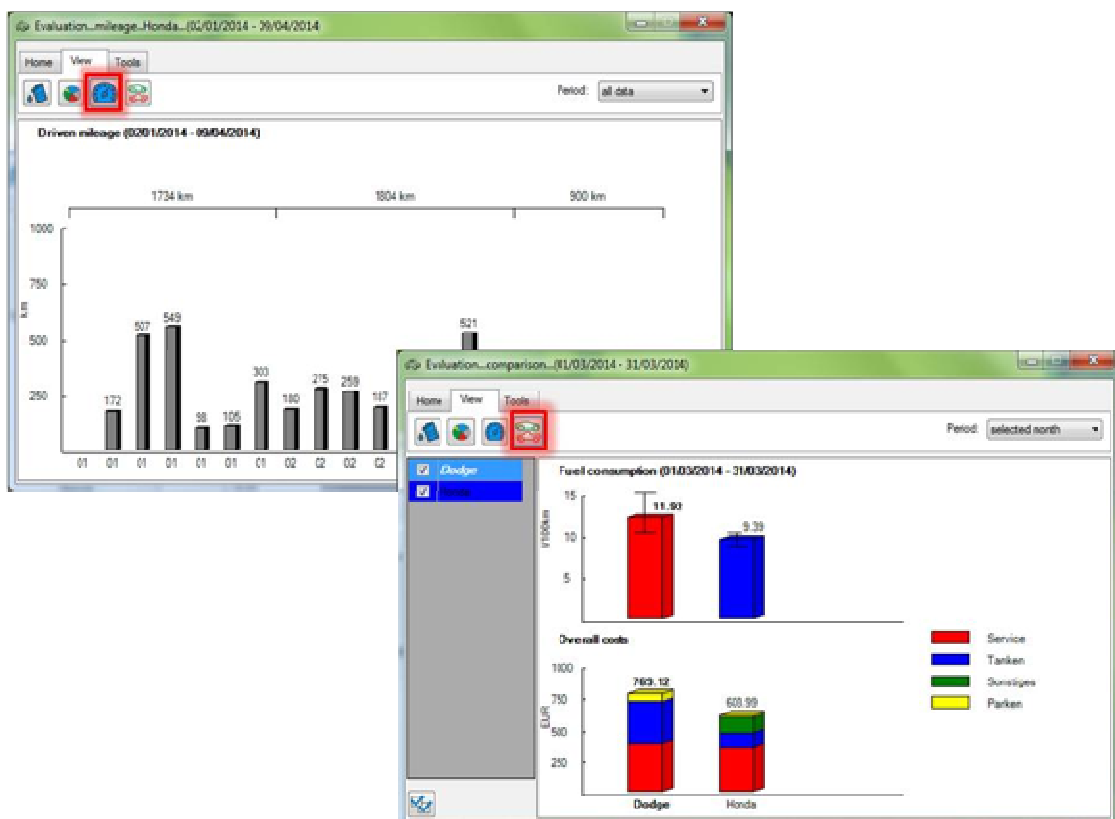
(1) Output/visualization of all data for arbitrary periods of time

The basis version shows the data by default for the currently selected month in the date-pick box. The full version enables you to choose the period of time for which you want to show your data arbitrarily in the drop-down menu. This includes the tables in the main window and the driver's log as well as the charts in the evaluation window.



(2) Graphic evaluation of mileage and vehicle comparison

The full version adds two additional functions for the graphic evaluation. You can visualize the driven mileage of your vehicles in a column chart for a specific period of time. Furthermore, you can compare all (or some of) your vehicles regarding cost and fuel consumption in a chart.



(3) Print

The full version enables you to print your data in different styles. In the main window you can select to print your data as tables and in the evaluation window you can print the currently shown graph ("page-filling" landscape or "normal" portrait).

